

Australia's journey towards ICD-11

Developing a framework for implementation

Anne Elsworthy – Director, Acute Care Classifications
Independent Health and Aged Care Pricing Authority



Introduction





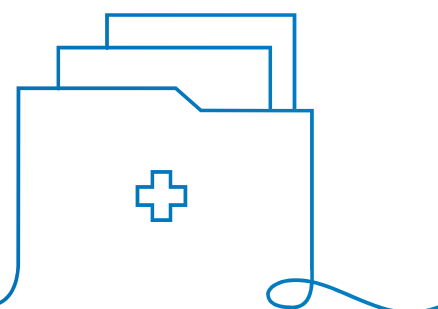
ICD-11 supersedes ICD-10

- **ICD-11** became the international standard for reporting diseases and health conditions on **1 January 2022**
- WHO plans to release a new version of ICD-11 every 5 years
- There is no decision yet as to when **ICD-11** will be implemented in Australia

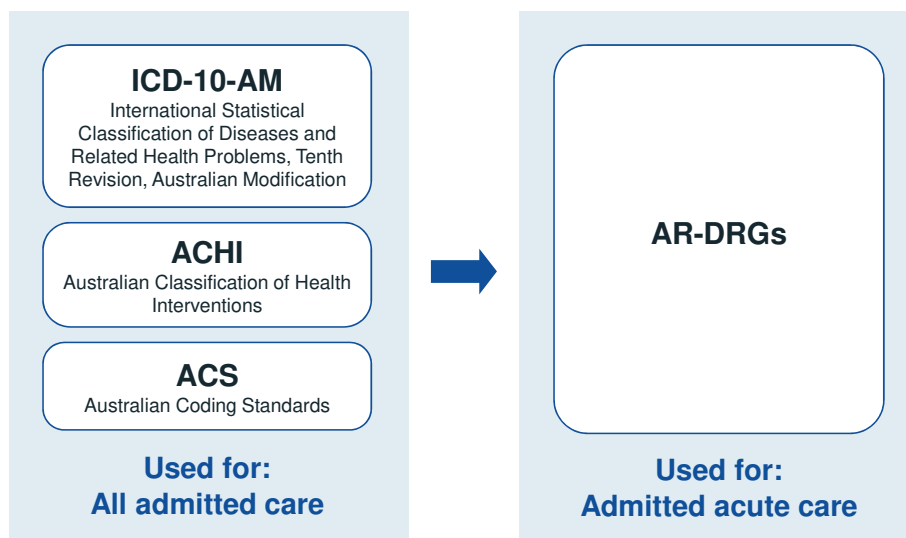


What does ICD-11 offer over ICD-10?

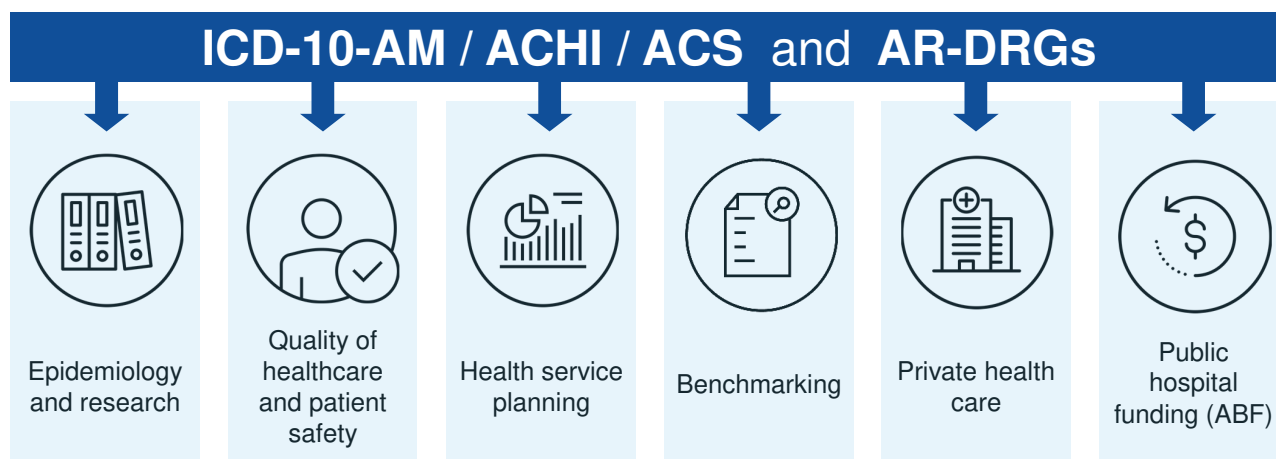
- reflects the latest advances in science and medicine in a completely electronic format
- polyhierarchical
- new chapters
- extension codes
- clustering
- subsets created from foundation layer
- potential link to terminologies



ICD-10-AM current use



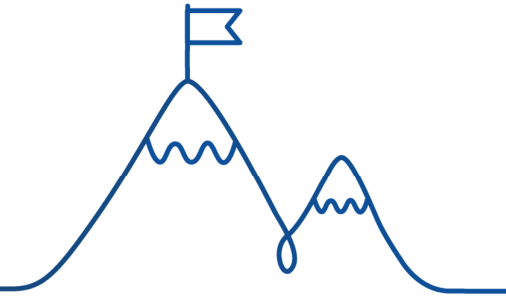
Multiple uses of classifications





What are the challenges?

- Daunting prospect to replace a highly utilised and embedded classification such ICD-10-AM with ICD-11. Especially as taking advantage of modern digital capabilities means that ICD-11 has been completely restructured.
- Despite these challenges the Independent Health and Aged Care Pricing Authority recognises its advantages and is committed to the ICD-11 journey.



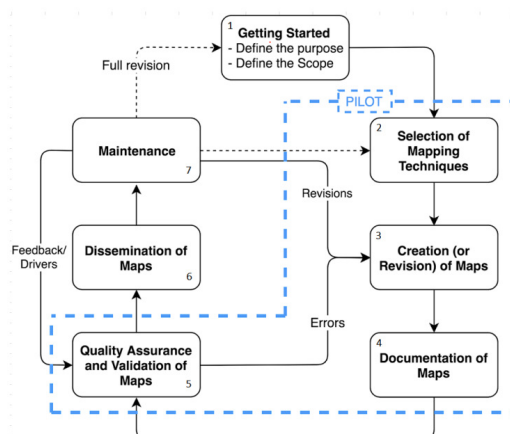
What is needed to prepare for an implementation of ICD-11?

Will Australia keep developing and modifying ICD-10?



Mapping ICD-10-AM to ICD-11

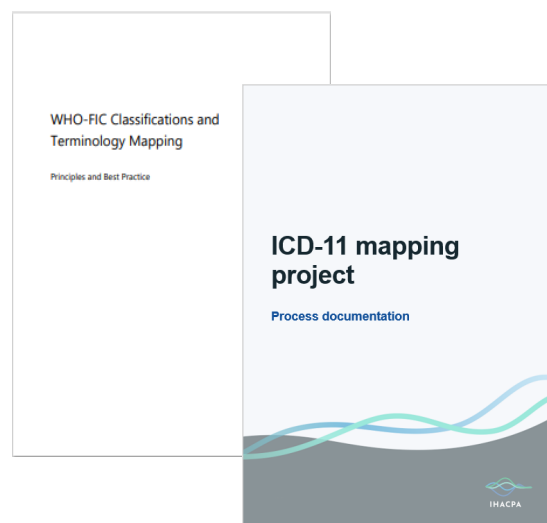
- In 2023 IHACPA commenced a project to map ICD-10-AM to ICD-11
- Identify gaps and additional features in ICD-11
- Foundation to assess impact on morbidity reporting and facilitate reporting in ICD-11





Mapping ICD-10-AM to ICD-11

- Project plan sets out the scope, method, quality assurance and maintenance of the maps
- Collaboration with WHO-FIC ICD-11 Mapping Taskforce
- *WHO-FIC Classifications and Terminology Mapping: Principles and Best Practice*



Preliminary findings from one chapter

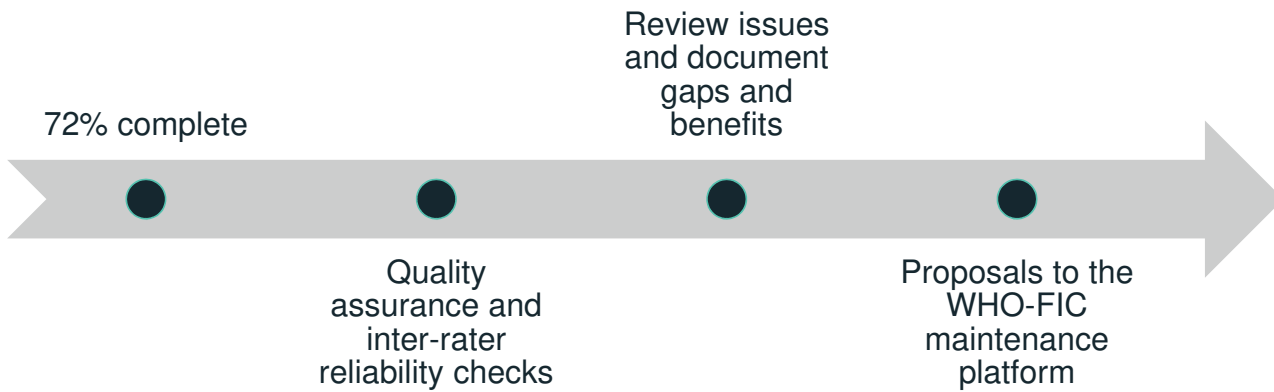
Chapter 3 Diseases of the blood and blood-forming organs and certain disorders involving the immune mechanism

Exact matches with ICD-10-AM	93	56%
Lesser specificity than ICD-10-AM	55	33%
Greater specificity than ICD-10-AM	17	10%
No match with ICD-10-AM	2	1%

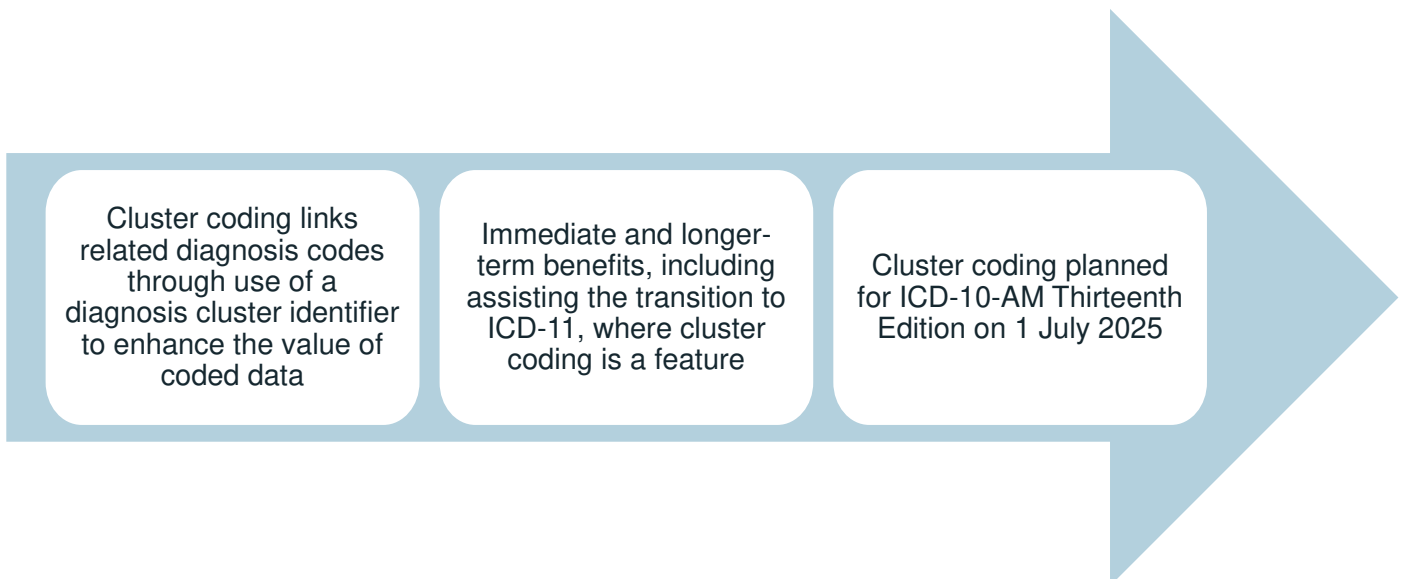
Findings: Confirms both gaps and greater specificity in ICD-11 when compared to ICD-10-AM



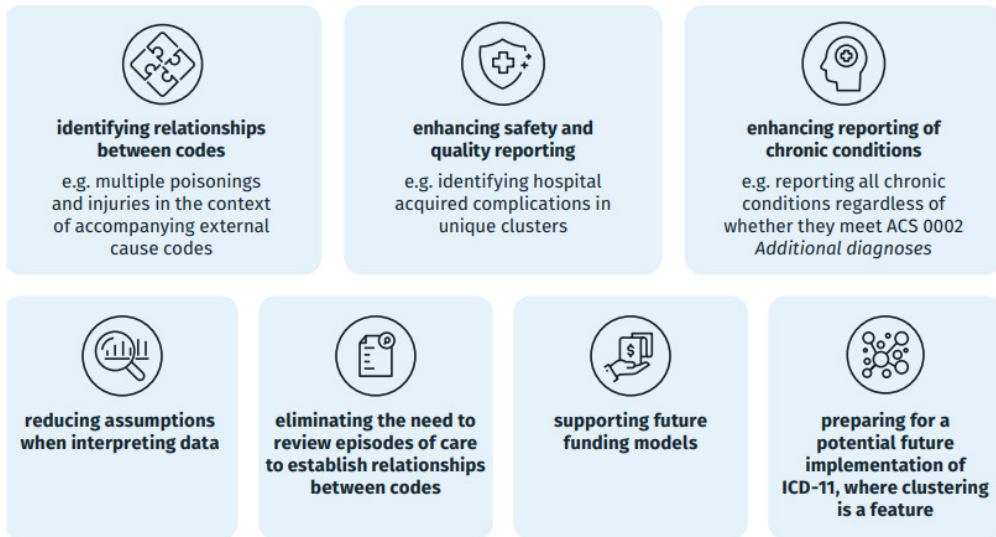
Next steps for mapping project



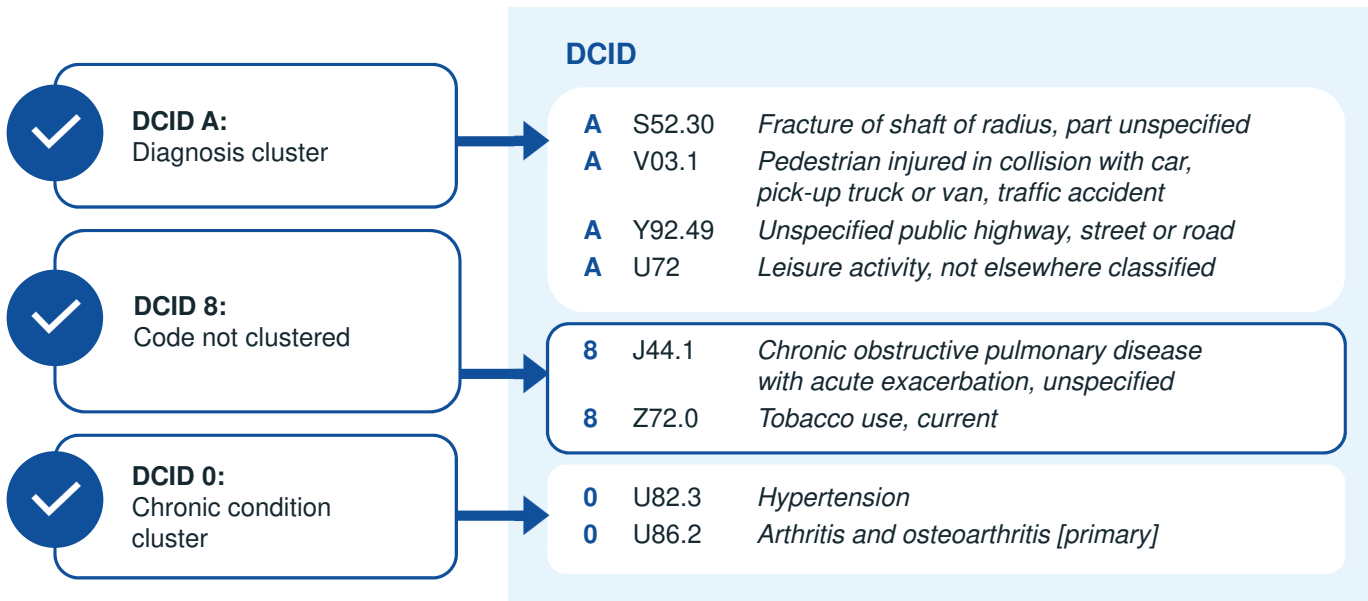
Implementing cluster coding



Benefits of cluster coding



How does it work?

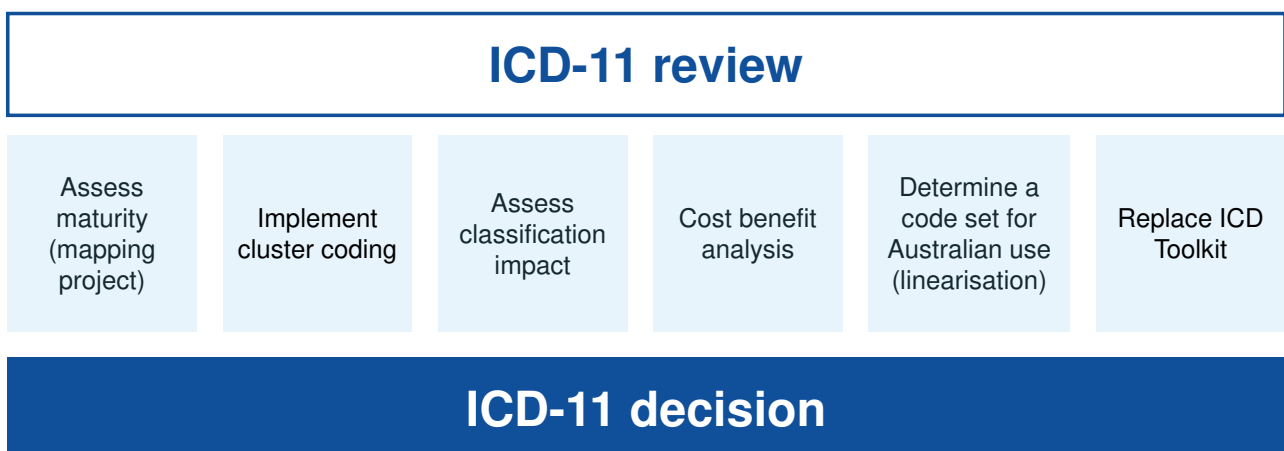


Other ICD-11 considerations

- On completion of mapping the impact of ICD-11 on other classifications such as AR-DRGs needs to be assessed
- Project to consult, develop and conduct a cost benefit analysis for a potential ICD-11 implementation
- Determine the need for an Australian ICD-11 code set (linearisation)
- Replacement of the 'ICD Toolkit' that generates classification outputs to minimise current manual processes and functionality to support ICD-11



Summary of framework for a decision





More information



Cluster coding
web page




Subscribe to
IHACPA news

Thank you

 ihacpa.gov.au/health-care/classification

  @IHACPA

 Independent Health and Aged Care Pricing Authority